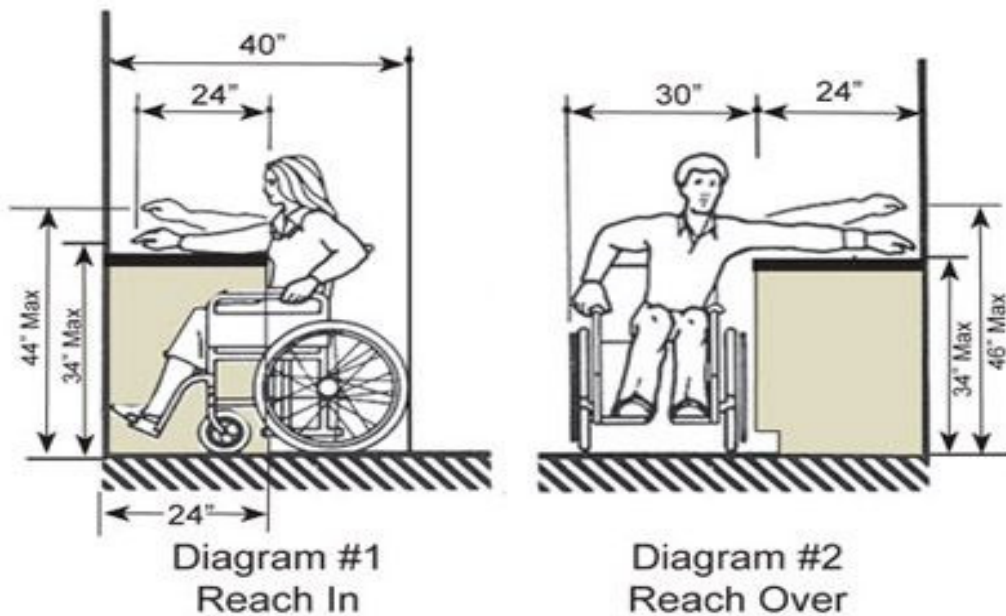




ADA counter-top Reach Over requirements of 24"



To achieve proper fitment of dishwashers, ranges and/or cook-tops, sink bowls and faucet installations cabinet depths provided are approximately 24" which is the industry standard. Currently Royal Cabinets provides just under the 24" as we build using the metric system for our true European frameless cabinetry. To achieve the ADA requirements outlets are installed in splashes (equaling the bullnose overhang) or on fillers at the front of the cabinet. Currently Royal Cabinets has provided approximately over a half a million apartment units in Southern California without issues when these means of construction are followed. Royal Cabinet's prides itself on meeting or exceeding all ADA requirements.